



# Installer 2.0 Command Line Guide

DU-05230-01v06 | September 26, 2012

User Guide



# 01 NVIDIA INSTALLER 2.0 DRIVER INSTALLATION

This document describes how to install the NVIDIA graphics driver using the command line for the NVIDIA Installer 2.0. It lists the supported switches, package location, and error codes.

- ▶ “Packaging and File Location” on page 1
- ▶ “Command Line Syntax” on page 2
- ▶ “Driver Installation Switches” on page 3
- ▶ “Installation Setup Examples” on page 5
- ▶ “Deselecting Driver Packages Using the Config File” on page 7
- ▶ “Return Error Codes” on page 9

## Packaging and File Location

The executable "setup.exe" is located at the same directory level as support files—such as the NVI2 directory and sub-package directories. An editable configuration file (setup.cfg) must sit at the same location as setup.exe. The configuration file specifies a EULA that also sits at the same location as setup.exe.

## Command Line Syntax

### ► Setup.exe [switches] [package]

Where

- *switches* are optional modifications to the setup command.  
See “[Driver Installation Switches](#)” on page 3 for a description of supported switch options.
- *package* is the individual package to install or uninstall.

The following table lists the supported packages and the designation to use in the command line.

Table 1.1 Package Names

Driver package	Installer Package Name Designation
NVIDIA Display Driver	Display.Driver
NVIDIA Control Panel	Display.ControlPanel
NVIDIA 3D Vision	Display.3DVision
NVIDIA nView	Display.NView
NVIDIA Stereoscopic 3D USB Driver	Display.NVIRUSB
NVIDIA Quadro Performance Driver	Display.PerformanceDriver
NVIDIA PhysX System Software	Display.PhySX
NVIDIA WMI Provider	Display.NVWMI
NVIDIA Update	Display.Update
NVIDIA HD Audio Driver	HDAudio.Driver

## Driver Installation Switches

This section lists the supported switches for use with the command line installation command `setup.exe` for NVIDIA graphics drivers. These switches are optional.

Table 1.2 Driver Installation Switches

Option	Example	Description
<code>-h:pixels</code>	<code>-h:1600</code>	Sets display horizontal resolution
<code>-v:pixels</code>	<code>-v:1200</code>	Sets display vertical resolution
<code>-b:depth</code>	<code>-b:32</code>	Sets bit depth (bits per pixel)
<code>-j:freq</code>	<code>-j:60</code>	Sets refresh frequency (Hz)
<code>-k</code>	<code>-k</code>	Force reboot after install or uninstall, even if reboot is not required
<code>-n</code>	<code>-n</code>	Ignore reboot after install or uninstall, even if reboot is required
<code>-s</code>	<code>-s</code>	Silent install or uninstall - don't show any UI
<code>-i</code>	<code>-i</code>	Do not show welcome/reboot, but show package selection UI if needed and progress
<code>-clean</code>	<code>-clean</code>	Sets the clean installation option. This installs the driver with default settings, and erases settings from previous installations. <i>Available in Release 290 and later drivers</i>
<code>-deselect</code>	<code>-deselect:&lt;package name&gt;</code>	Deselects the particular package from installation. <i>Available in Release 290 and later drivers.</i>
<code>-ignorepnf</code>	<code>-ignorepnf</code>	Ignore the presence of the "Found New Hardware" wizard and continue installing the driver. <i>Available in Release 280 and later drivers.</i>
<code>-passive</code>	<code>-passive</code>	Only show progress bar, no interactive UI.

Table 1.2 Driver Installation Switches (continued)

Option	Example	Description
-prestage	-prestage	Place the package on the machine, but do not install it yet. When the device(s) become present, the OS will trigger the install. This can be used when hardware is not yet present on the machine.
-log[: <i>log file path</i> ]	-log:"C:\logpath"	Enable logging to the specified file path.
-loglevel: <i>levelNumber</i>	-loglevel:3	<p>Enable logging with the specified level of information.</p> <p>Available log levels:</p> <p>0: inhibit all log messages</p> <p>6 and above: display all log information</p> <p>5: display debug and below information</p> <p>4: display warning and below information</p> <p>3: display error and below information</p> <p>2: display critical and below information</p> <p>1: display only system information</p>
-uninstall	-uninstall	Perform an uninstall instead of install

## Installation Setup Examples

This section contains examples of how to use certain installation switches.

### Switch: -s

To silently install only the display driver:

```
setup.exe -s Display.Driver
```

### Switch: -uninstall

► To uninstall the display driver and all other dependent components:

```
setup.exe -uninstall Display.Driver
```

► To uninstall the PhysX driver and all other dependent components:

```
setup.exe -uninstall Display.Physx
```

### Switch: -s, -n, and -uninstall

To perform a silent uninstall of the display driver and all other dependent components, and do not reboot even if a reboot is needed:

```
setup.exe -s -n -uninstall Display.Driver
```

### Switch: -s, -clean

To perform a silent clean install of the display driver:

```
setup.exe -s -clean Display.Driver
```

## Switch: -log[:logpath] & -loglevel:levelnumber

- ▶ To create a log file, specifying the log path (for example, c:\test1) and the logging level (for example, level 6):

```
setup.exe -log:"C:\test1" -loglevel:6
```

- ▶ To create a log file using the previously set file path and logging level:

```
setup.exe -log
```

- ▶ If no file path was previously set, then the default temp location on your system is used, for example:

- Under Windows Vista or Windows 7

```
C:\users\<user_name>\AppData\Local\Temp\NvidiaLogging
```

- Under Windows XP

```
C:\DOCUME~1\<user_name>\LOCALS~1\Temp\NvidiaLogging
```

- ▶ If no logging level was previously set, then the default level '2' is used.



**Note:** Logging registry information may already be set on your system if you executed FullLogging.reg before running setup.exe.

## Switch: -deselect:<package name>

- ▶ To install the display driver and all other dependent and applicable components except for the NVIDIA 3D Vision:

```
setup.exe -deselect:Display.3DVision
```

- ▶ To install the display driver and all other dependent and applicable components except NVIDIA 3D Vision and NVIDIA Update:

```
setup.exe -deselect:Display.3DVision,Display.Update
```

or

```
setup.exe -deselect:"Display.3DVision, Display.Update"
```

or

```
setup.exe -deselect:Display.3DVision -deselect:Display.Update
```



This option cannot be used with package options. For example, the following are invalid command line entries:

```
setup.exe Display.Driver -deselect:Display.3DVision
```

or

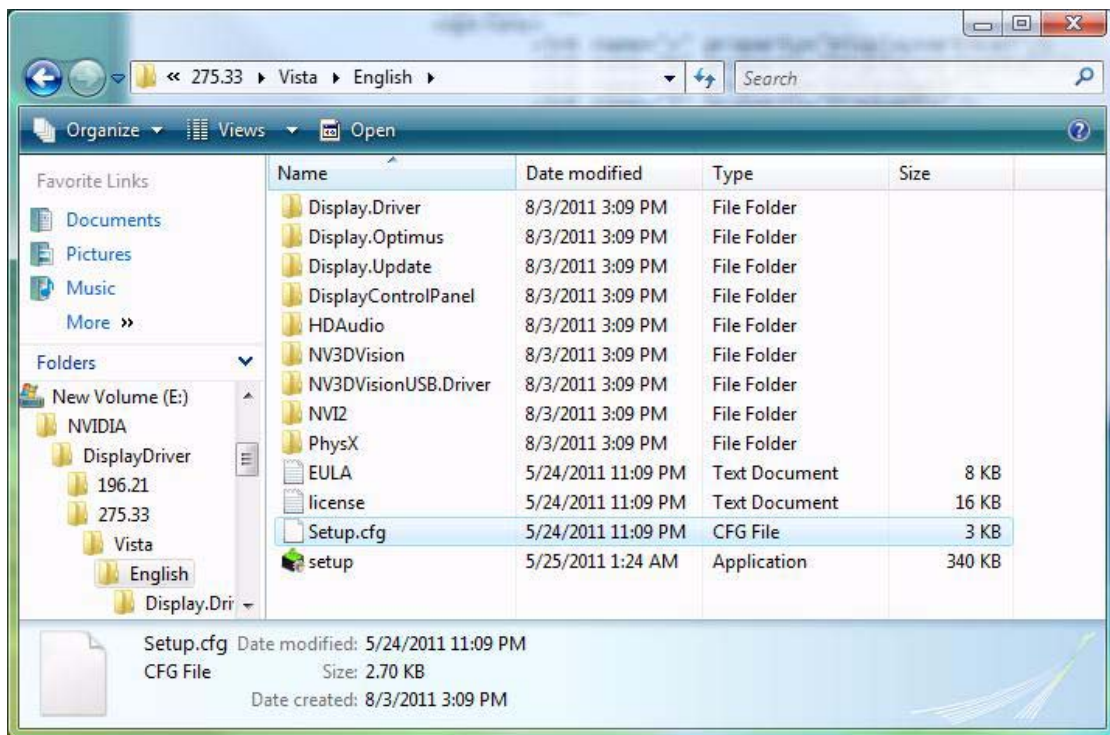
```
setup.exe Display.NView -deselect:Display.3DVision
```

## Deselecting Driver Packages Using the Config File

You can prevent the installer from installing certain driver packages by modifying the configuration file setup.cfg before running setup.exe.

- 1 Open the file setup.cfg using a text editor.
- 2 Locate the section inside of the <search> </search> tags.  
The <search> tags are located inside of the <install> </install> tags.
- 3 Add the following <deselect> tag for each package that you do not want to install:  
`<deselect name="[folder name]\**\*" />`  
where "[folder name]" is the name of the folder corresponding to the package that you do not want to install.
- 4 Save the file.

For example, to prevent installation of the 3D Vision software from the package shown in the following figure,



edit the setup.cfg file by adding the text indicated in bold as follows:



```
<install>
  <search dir=".">
    ...
    <deselect name="NV3DVision\**\*" />
    ...
  </search>
  ...
</install>
```



**Note:** Use the name of the folder (i.e. NV3DVision), not the name of the package (Display.3DVision).

## Return Error Codes

Table 1.1 provides a list of the primary Installer 2.0 error codes with which users should be familiar.

Table 1.1 Installer Error Codes

Code	Mnemonic	Description
0x00000000	S_OK	Success, no reboot required
0x00000001	S_FALSE	Success, reboot required (unless UI was shown, and the user chose to skip reboot)
>= 0x80000000		Error
0x8007xxxx		Windows error xxxx
0x8007FFFF	E_UNEXPECTED	Unspecified fatal error in installer
0xE0E0xxxx		NVIDIA-specific error
0xE0E00000	CODE_STATE	Internal error in installer, potentially an installer bug
0xE0E00001	CANCELLED	Install was cancelled
0xE0E00011	CONSTRAINTS	Install aborted due to constraints (pre-conditions)

## Notice

ALL NVIDIA DESIGN SPECIFICATIONS, REFERENCE BOARDS, FILES, DRAWINGS, DIAGNOSTICS, LISTS, AND OTHER DOCUMENTS (TOGETHER AND SEPARATELY, "MATERIALS") ARE BEING PROVIDED "AS IS." NVIDIA MAKES NO WARRANTIES, EXPRESSED, IMPLIED, STATUTORY, OR OTHERWISE WITH RESPECT TO THE MATERIALS, AND EXPRESSLY DISCLAIMS ALL IMPLIED WARRANTIES OF NONINFRINGEMENT, MERCHANTABILITY, AND FITNESS FOR A PARTICULAR PURPOSE.

Information furnished is believed to be accurate and reliable. However, NVIDIA Corporation assumes no responsibility for the consequences of use of such information or for any infringement of patents or other rights of third parties that may result from its use. No license is granted by implication of otherwise under any patent rights of NVIDIA Corporation. Specifications mentioned in this publication are subject to change without notice. This publication supersedes and replaces all other information previously supplied. NVIDIA Corporation products are not authorized as critical components in life support devices or systems without express written approval of NVIDIA Corporation.

## HDMI

HDMI, the HDMI logo, and High-Definition Multimedia Interface are trademarks or registered trademarks of HDMI Licensing LLC.

## Macrovision Compliance Statement

NVIDIA Products that are Macrovision enabled can only be sold or distributed to buyers with a valid and existing authorization from Macrovision to purchase and incorporate the device into buyer's products.

Macrovision copy protection technology is protected by U.S. patent numbers 5,583,936; 6,516,132; 6,836,549; and 7,050,698 and other intellectual property rights. The use of Macrovision's copy protection technology in the device must be authorized by Macrovision and is intended for home and other limited pay-per-view uses only, unless otherwise authorized in writing by Macrovision. Reverse engineering or disassembly is prohibited.

## OpenCL

OpenCL is a trademark of Apple Inc. used under license to the Khronos Group Inc.

## Trademarks

NVIDIA and the NVIDIA logo are trademarks or registered trademarks of NVIDIA Corporation in the United States and other countries. Other company and product names may be trademarks of the respective companies with which they are associated.

## Copyright

© 2011 NVIDIA Corporation. All rights reserved.